

INSPIRED⁵⁴

December 2019 - **NOT FOR SALE** - An inspiration book of interior design references. - www.mhllt.com

INTERIOR DESIGN



MAHALLATI
INTERIOR DESIGN

*Chic Ways to Embrace
Rustic Decor*

*Modern Fireplaces
That Will Spark Major
Design Inspo*

*How to Get Creative
With Industrial-style
Pendant Lights*

Visit our website:
www.mhllt.com

Designed to Be Distinguished

Mahallati is an internationally acclaimed interior design, manufacturing and production firm based in Bali, Indonesia.

With a team of over 120 artisans, designers, woodcrafters, metal workers, upholsterers and consultants in related fields with over

a century of collective industry experience; we work closely with our clients to create exceptional work. Our innovative workflow results in a true end-to-end solution and our growing portfolio of successfully executed projects have won awards and hearts across 3 continents.

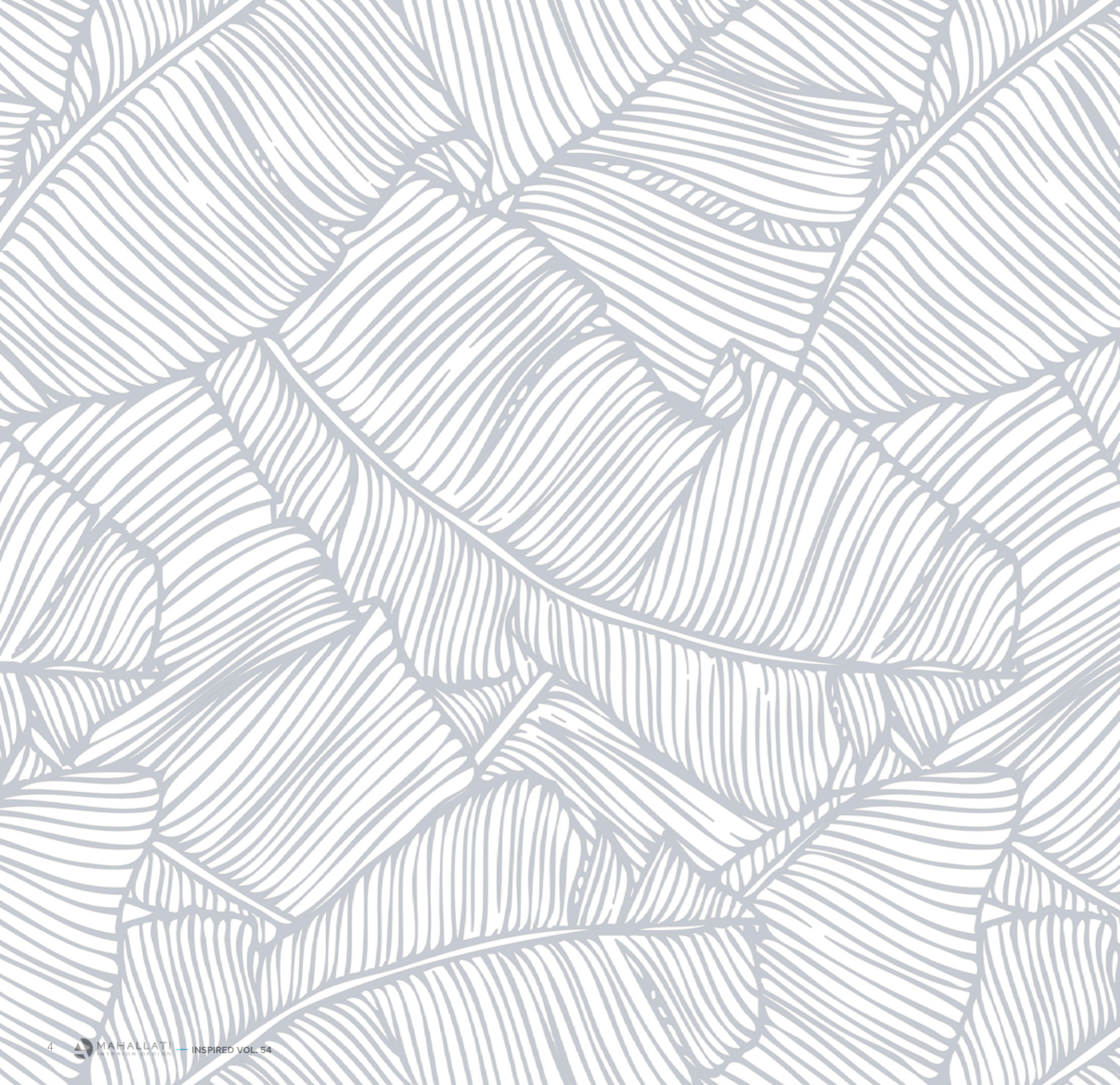


CONTACT

+62 817 551 414
info@mhllt.com

LOCATION

Jl. Gn. Tangkuban Perahu
No.303, Padangsambian
Klod, Denpasar Bar.,
Kabupaten Badung, Bali
80117



**WHAT'S
INSIDE?**

Chic Ways to Embrace
Rustic Decor

Modern Fireplaces That
Will Spark Major Design
Inspo

How to Get Creative
With Industrial-style
Pendant Lights

Visually Inspired

Chic Ways to
Embrace



**RUSTIC
DECOR**



FARMHOUSE STYLE

A 19th-century Italian table from TallBoy Interiors and antique dining chairs steal the show in designer Rita König's northeastern England dining room. The curtains are of a Lee Jofa stripe, the artichoke lithograph is by Sarah Graham, and the walls are in Edward Bulmer's Lilac Pink.



AIRY RETREAT

White Company Founder Chrissie Rucker calls this airy rustic retreat in London home. In the pool house, a calming palette complements wood accents, making it the perfect place for guests to relax.



URUGUAYAN ABODE

In the living room of this Uruguayan retreat, the custom daybed is from Lucila Del Campo, a shop in the nearby resort town of La Barra. The curtains are of a natural linen, and the walls and floor are hand-poured concrete.



MOUNTAIN LODGE

In a Montana mountain lodge, steel-framed windows lend a modern edge to the wood-paneled living room, which overlooks the Rocky Mountains. The custom sofas are in a Studio Four NYC fabric, the custom settee is covered in a Hodsoll McKenzie fabric, and the custom swivel chairs and 1930s English wing chair are in fabrics from ALT for Living.



COLONIAL STYLE

A petite crystal chandelier and a lantern-style fixture add a touch of elegance to a rustic retreat in Connecticut, which is owned by Christian Siriano. White accents, including painted brick, lend a modern flair to the look.



STONE FIREPLACE

A stone fireplace adds a rustic touch to this vibrant living room owned by Amy Fine Collins. The Fishers Island family getaway features painted Louis XVI chairs that surround a 1940s table from Sutter Antiques.



MOUNTAIN LIVING

In that same Montana mountain lodge, the powder room's sink fittings, mirror, and wall light are by Waterworks, the custom sink is of stone, and the walls are clad in reclaimed whitewashed wood.



WOODSTOCK RETREAT

A mica pendant by Huniford Collection hangs above a Regency table and an 18th-century chair in the entry of this Woodstock, NY home; the 19th-century dressing table and 18th-century chair are American, the bronze statue is of Nicholas's grandmother Frances Ottley Wood, and the doors and flooring are reclaimed wood.

SKI CHALET



NEW YORK RETREAT

A petite crystal chandelier and a lantern-style fixture add a touch of elegance to a rustic retreat in Connecticut, which is owned by Christian Siriano. White accents, including painted brick, lend a modern flair to the look.



A 1970s Murano chandelier from Stéphane Olivier hangs above a marble-topped table by Bleu Nature in the dining room of the Rothschild's French ski chalet.



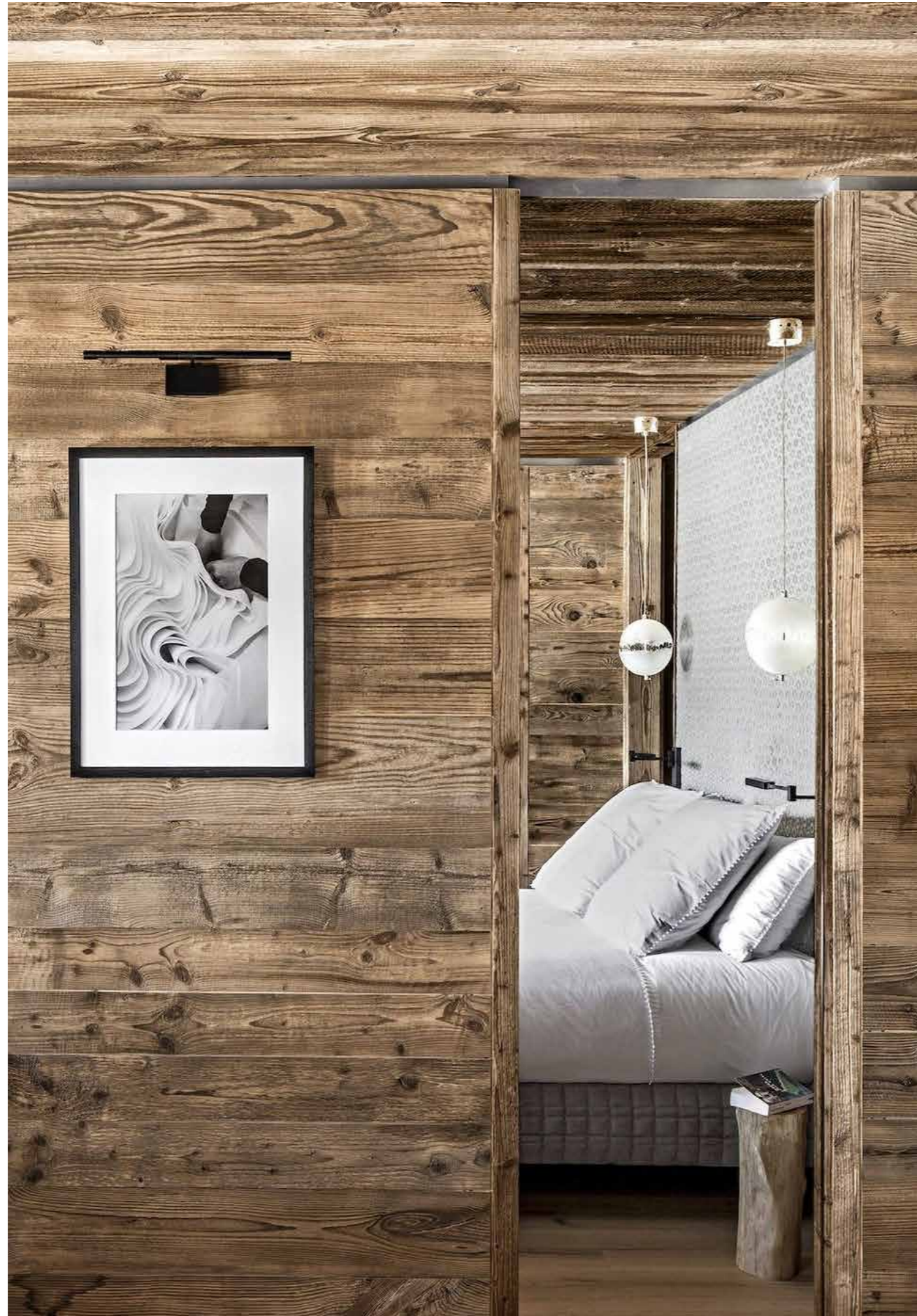
COTTAGE STYLE

From this angle, the kitchen in this restored English rectory reveals its cottage influence, with exposed wood and a beech paddle board from Garden Trading resting on the counter.



CITY CHARM

The dining room inside a historic Manhattan home boasts a pine trestle table from Belgium, a settee and bench from Finch, and a deconstructed English Regency wing chair from Lee Stanton Antiques. The walls are painted in Benjamin Moore's White Dove and the mantel in Onyx.



FRENCH SKI CHALET

In Rothschild's French ski chalet, a hallway sheathed in reclaimed wood leads to a guest bedroom.



MONTANA GUESTHOUSE

A cozy Montana guesthouse designed by Ken Fulk beautifully reflects its natural surroundings. The dining area, the table, stool, ceiling light, and chairs (each of which is stenciled with the name of a famous partyer) are by Christian Liaigre and the flooring is reclaimed oak.

COUNTRY VIBE



In the guest barn of Amanda Seyfried's Catskills country home, the kitchen island is framed in concrete, with a base painted in Overcoat by Benjamin Moore. The pendant lights are a custom design, and sliding doors repurposed from the original horse stalls lead to the guest rooms.

LUXE SKI CHALET

The living room in the Rothschild's French ski chalet was designed by architect Alain Mazza and decorated by Nathalie Oddo and Anne Gernez. The sofa is by Caravane, the cocktail tables are by Sempres, and the armchairs are from a Paris flea market.



FRENCH CHIC

The master bath's Agape tub in the Rothschild's French ski chalet is by Patricia Urquiola, and the black-and-white tile on the wall and floor is Moroccan.



NEW YORK PENTHOUSE



This New York City penthouse is full to the brim with antiques, including this Swedish sofa and Baroque chair, upholstered in Robert Kime fabrics. The armchair is 18th-century French and a vintage Persian Soumak rug from Istanbul's Grand Bazaar rests on a sea-grass rug from ABC Carpet & Home. Among the items on the wall are an antique water-buffalo skull, 19th-century French gouaches and a drawing by Jean Cocteau.



PARISIAN STYLE

The antique Persian rug in this Paris apartment contributes to its well-traveled feel. The bedroom features animal drawings by Paul Jouve, Georges Lucien Guyot, and André Margat, the bed is a custom and the 19th-century chandelier is by Baguès. The walls are painted in Farrow & Ball's Wevet.

PENTHOUSE LIVING

Antiques from a variety of time periods and locations adorn a Greenwich Village penthouse. The bed is upholstered in a Robert Kime stripe and dressed in antique French linens, the side table is 18th-century English, the lantern is 19th-century Indian, the mirror is 18th-century Italian and the landscape paintings are English, French and American. The walls are painted in Farrow & Ball's Off-White

FRENCH KITCHEN

The beautiful marriage of reclaimed wood floors and antique furniture makes this French kitchen a quaint space that is big on style. The buffet is by Astuguevieille, and the antique chair is Basque.



STYLISH CHALET

In the master bedroom of the Rothschild's French ski chalet, a sliding screen separates the bed from the adjoining bath. An Airborne chair pulls up to a built-in desk in reclaimed wood.



CONTEMPORARY FARMHOUSE

Pops of plaid in warm tones can give any space an instantly laid-back country feel. In the library of this L.A. home, the family's dachshund rests on one of a pair of armchairs from Obsolete covered in Ralph Lauren Home plaids. The oak table is from Lucca & Co., the early-20th-century leather armchair is English, the bookshelves and ladder are from Style de Vie, and the ceiling is clad in metal siding from Texas barns.



NEW YORK PIED-À-TERRE

A fireplace is the perfect country-inspired accessory, if not for the nostalgic smell, then definitely for the ambiance. In this sleek New York home, the dining table by Jérôme Abel Seguin is from Ralph Pucci, the vintage chairs are by Jean Prouvé, the photograph over the mantel is by Catherine Opie, the sculpture is by Elliott Hundley, and the vases on the mantel are by Rick Owens.



CARRIAGE HOUSE

Give empty walls a storied look, like this newly-painted antique breakfront in the entry of a home in Bedford, New York. It is topped with Spanish terra-cotta pots from the 1930s and filled with colorful dishware to complete the look.

PORTUGAL BEACH HOME

In a beach house in Portugal, the master bathroom takes on a rustic feel with plenty of reclaimed wood and greenery. The sink was made locally, the fittings are by Grohe, the mirror is by Ikea, and the floor is poured concrete.



CATSKILLS ESCAPE

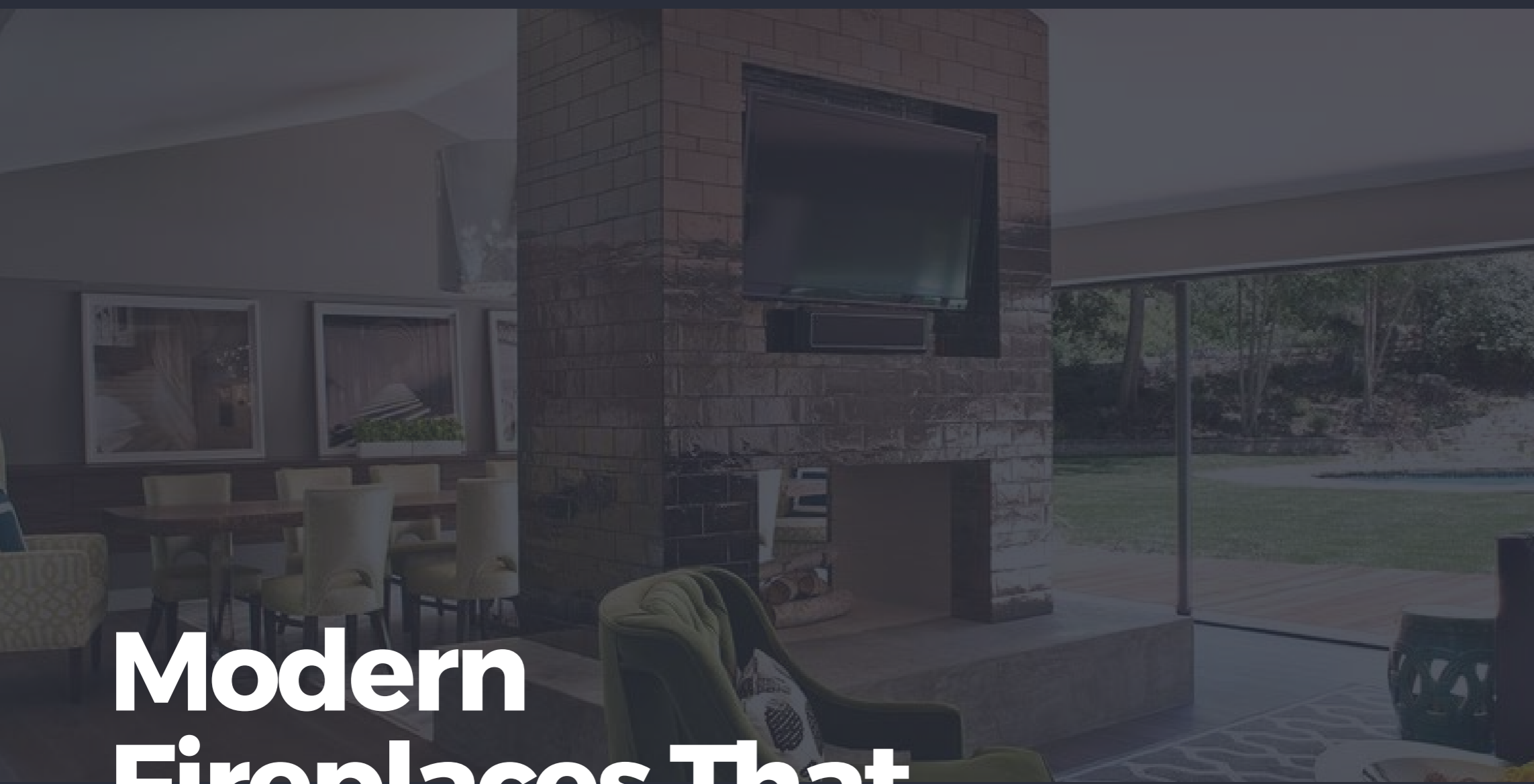


ECLECTIC STYLE

Antique chairs from Mudpie surround a vintage French dining table of this Northern California dining room. The table lamps are from John Derian, the chandelier is from Big Daddy's Antiques, and the walls are painted in Emery & Cie's Vermoulu 6.



Amanda Seyfried's Catskills retreat is filled with handcrafted furnishings and animal companions, like her dog, Finn. In the master bedroom, the bed is by Restoration Hardware, the bench is from Gilt, and the rug is from ABC Carpet & Home; the pendant light is by &tradition, and the beadboard walls are painted in Ammonite by Farrow & Ball.



Modern Fireplaces That Will Spark Major Design Inspo

Even when not in use, a fireplace is a focal point of whatever space it occupies. Decorative yet functional, cozy yet sleek, a modern take on the traditional hearth offers the best of both worlds when it comes to any design scheme. And while a fireplace does provide warmth, there's no reason it can't be cool and contemporary.



MURAL WALL

In the entertainment room of this Richard Mishaan-designed TriBeCa home, a fireplace is covered in a mural depicting a geode, serving as a focal point for the gem-toned space.



CRISP WHITE

In an East Hampton home belonging to two art collectors, crisp white walls are warmed up with an inset fireplace, which is appropriately styled given the home's stark design.



FLOATING FIREPLACE

In The White Company founder Chrissie Rucker's poolside oasis, a floating center fireplace is the perfect place to huddle around, with a cement design that sticks to the pool house's rustic aesthetic.



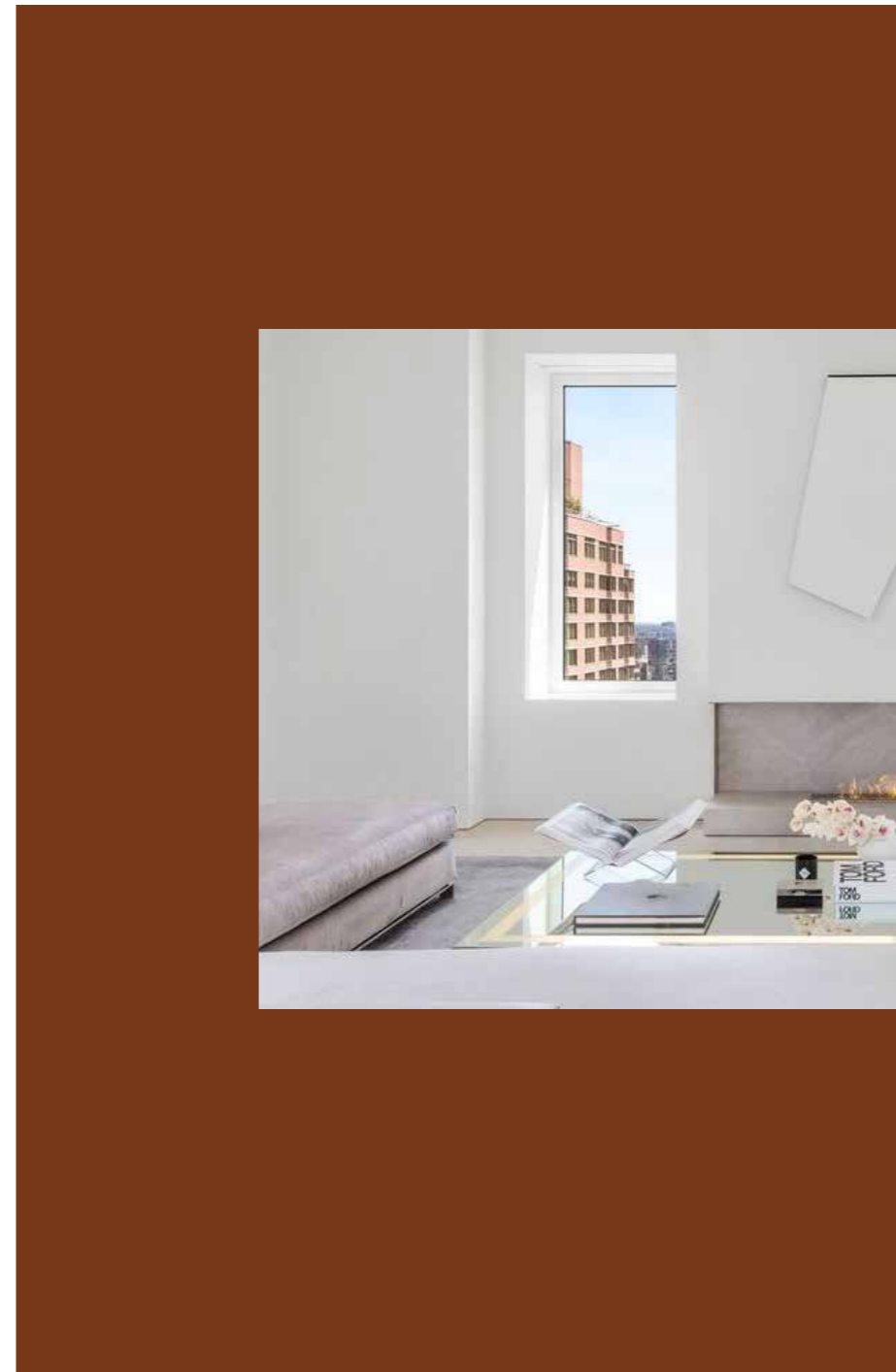
MOODY STACKED STONE

The cool-toned stacked stone on this Malibu living room fireplace offers a sleek contrast to the fire's warm glow.



POLISHED MARBLE

In Entertainment Tonight host Keltie Knight's master bedroom, an original fireplace is given a modern facelift with simple white marble and a matte black mantel. While the room boasts a modern design, the warmth of the hearth adds a layer of coziness.



GRAY TONES

A contemporary marble fireplace in Jeffrey Dodd's Manhattan penthouse is backed by warm gray marble that blends in with the room's monochromatics.



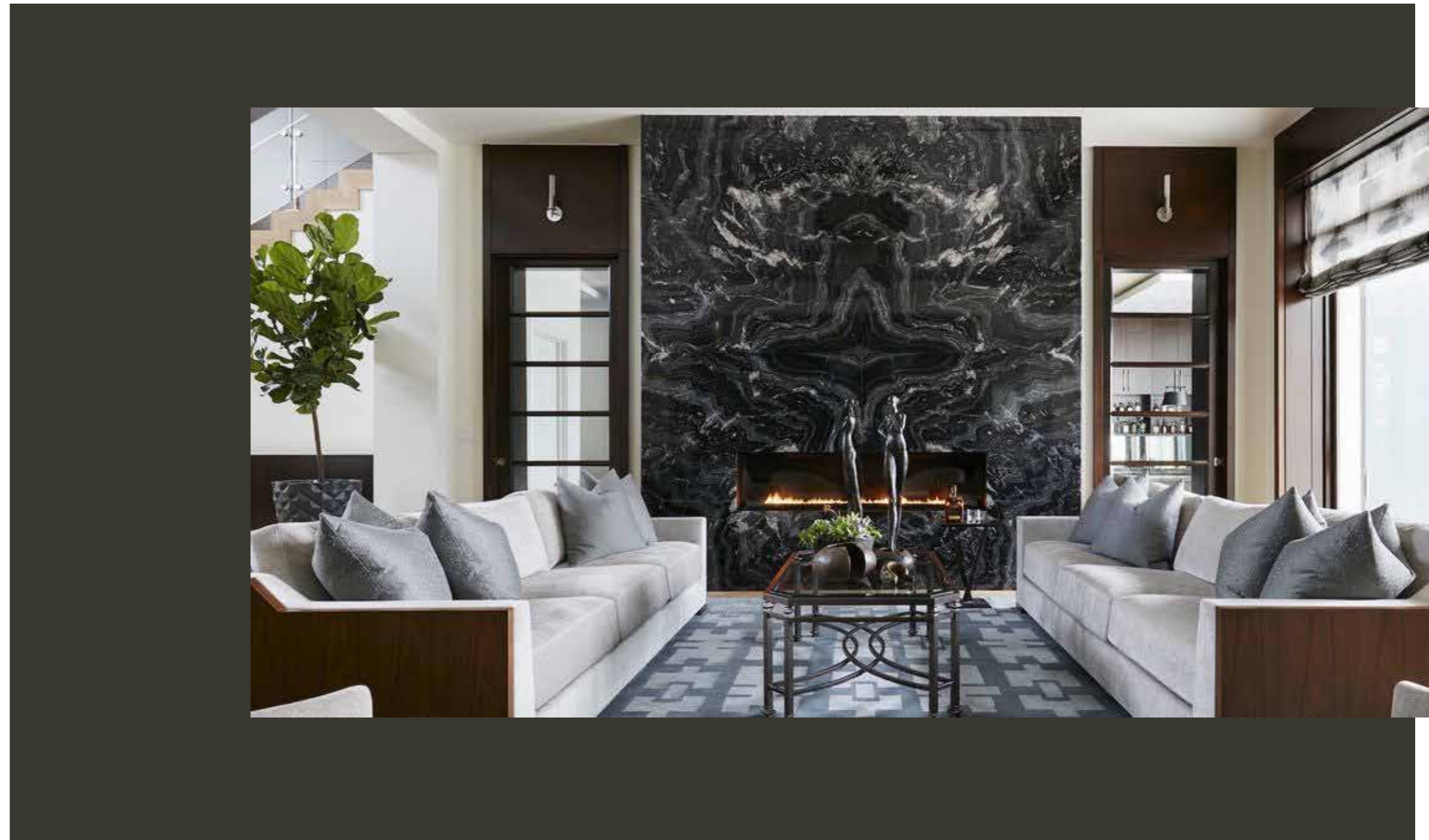
METALLIC BRICK

In this open concept home designed by Soler Architecture and Design, a modern two-way fireplace is given a reflective façade, thanks to metallic bricks that reflect the abundant natural light in the space.



BLACKENED- STEEL FIREPLACE

In a Montana ski house, the blackened-steel mantel in the master bedroom is framed by a wall clad in Japanese clay tiles from Chelsea Arts Tile & Stone. The custom stool has a seat in an Edelman Leather shearling, and the fireplace tools are from Kaufmann Mercantile.



VEINED BLACK MARBLE

A modern space is given a sultry edge with a floor-to-ceiling fireplace in a glossy black marble. The direct-vent design creates shorter flames, enhancing the contemporary appeal.



SLEEK WOOD-BURNING STOVE FIREPLACE

In the living area of a barn on Amanda Seyfried's Catskills property, an original wood-burning stove is backed by a wall of custom concrete tiles; the chair is vintage.



MATCHING MARBLE FIREPLACE

In a London home, the living room's custom sofa is upholstered in a Bruno Triplet silk, a midcentury chair from Blackman Cruz is covered in an Etro fabric, the cast-terrazzo stools are by Maddux Creative, the mirror is by Marianna Kennedy, and the paintings flanking it are by Peter Lanyon.



FLOOR-TO-CEILING FIREPLACE

In a New Jersey mansion, framed 19th-century English pressed plants in a sitting area; the wallcovering is by Phillip Jeffries.



SANDSTONE FIREPLACE

The living room chairs, cocktail table, and sofa are all by Casamidy; the artwork over the sofa, reproducing a 1936 telegram from R. Buckminster Fuller to Isamu Noguchi explaining Einstein's Theory of Special Relativity, is by Jose Dávila, and the chandelier installation is by Cerith Wyn Evans; a work by Ryan Brown hangs over a 17th-century Peruvian console, the 19th-century mirror is Mexican, and the sandstone mantel sits atop 18th-century Indian columns.



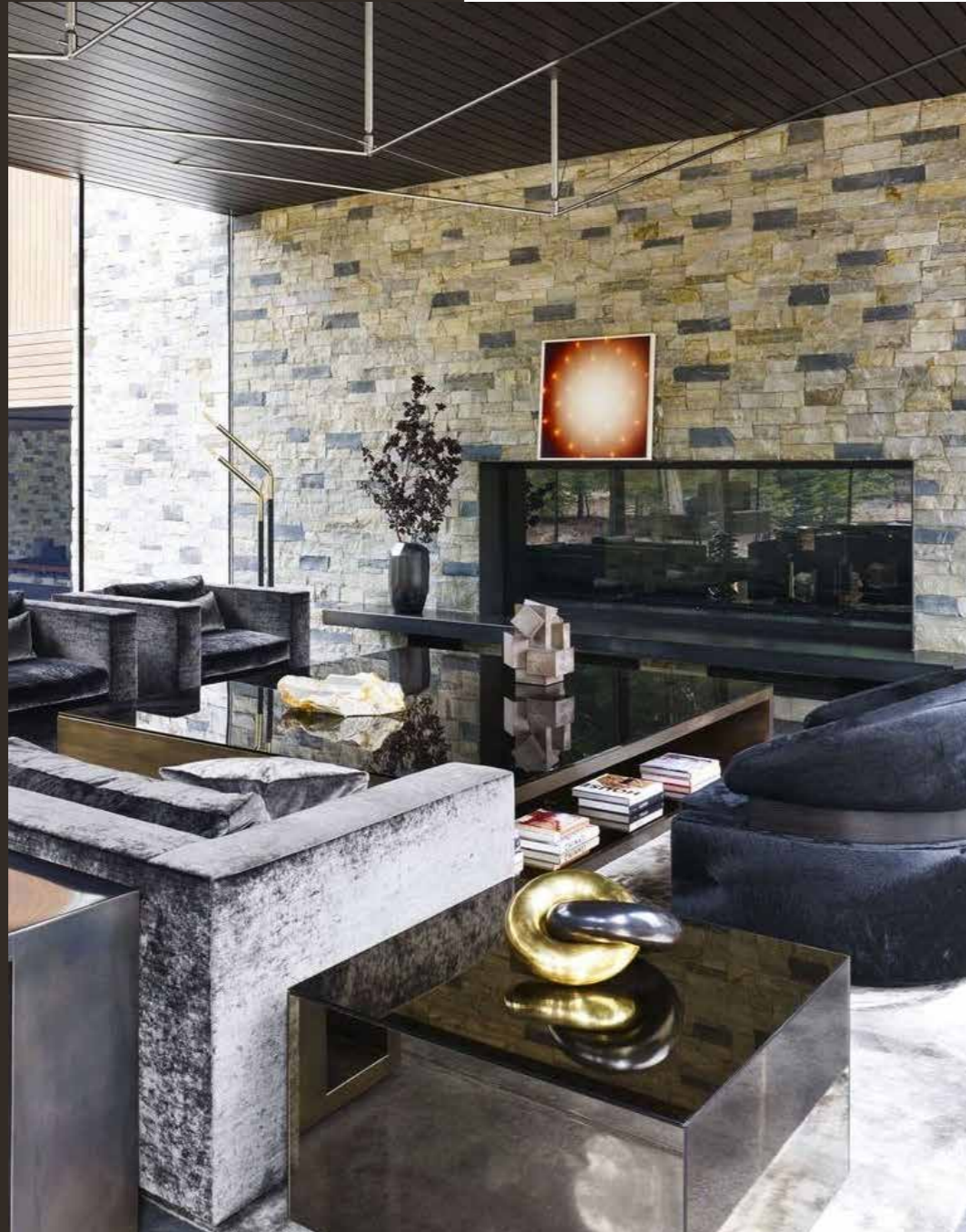
SIMPLE MONOCHROMATIC FIREPLACE

In the living room of fashion designer Andrew Gn's Paris apartment, 1950s wing chairs by Melchiorre Bega, upholstered in a Lelievre fabric, face armchairs by Emiel Veranneman and a cocktail table by Fredrik Schriever-Abeln, both from the 1960s; the custom-made floor lamps are by Didier Bazille, a painting by Philippe Garouste de Clauzade hangs above an Art Nouveau wood mantelpiece, the stools are late-19th-century, and the kilim is Turkish.



BRICK-LINED FIREPLACE

In the family room of a California home, the George Sherlock sofa is upholstered in a Raoul Textiles linen, the ottoman, covered in a de Le Cuona corduroy, is by Howe, the armchairs are from Dean Antiques, the stool is a Paris flea-market find, and the antique bench is from Ruby Beets; works by Sam McEwen and Hugo Guinness, among others, hang above the fireplace, the walls are painted in Emery & Cie's C'est Un Garçon, the cane shades are from Joss Graham, and the rug is by Beauvais Carpets.



**OVERSIZED
FIREPLACE**

In a Tahoe home, the mirrored side table in the living area is by Notre Monde, and the fireplace surround is stacked flagstone.



**NARROW COVERED
FIREPLACE**

The bed in the master bedroom of a London townhouse is dressed in a custom duvet made from a Dedar fabric, the letter-shaped stools are from Andrew Martin, and the walls are sheathed in a Jim Thompson silk with hand-sewn red silk borders; the drawing over the mantel is by Lluís Lleo, and the work over the bed, which is inscribed with Buddhist phrases, was purchased in Singapore.



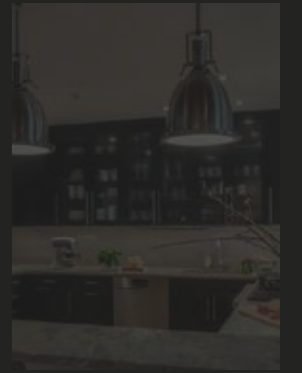
**SLEEK WHITE
FIREPLACE**

In a Manhattan family apartment, living room chairs are upholstered in indestructible white leather and fabric of woven metal threads.

HOW TO GET
CREATIVE WITH

INDUSTRIAL- **STYLE** **PENDANT** **LIGHTS**

- ◆ All the inspiration you need to give your space an edge.



Whether it's with exposed brick, weathered wood, or rustic metal accents, architects and designers continue to embrace industrial-inspired interiors. A matte black pendant is the perfect finishing touch in a

refurbished loft, while a pair of distressed bronze pendants bring an industrial flair to a modern interior. Regardless of your interior design style, discover unique ways to incorporate industrial-style pendant lights into your space.



RUSTIC MEETS INDUSTRIAL

Raw wood cabinetry and countertops give this space a rustic feel, while the exposed ductwork and metal pendant lighting add a touch of industrial design. Interior by SUBU Design Architecture.



BEAUTIFUL BLUES

Blue Bahia granite countertops, a glass tile backsplash, and a lantern-style fixture complete this compact kitchen by Iantha Carley Interiors.



DARK METAL ACCENTS

A home office by CM Natural Designs draws inspiration from industrial-style design, which can be seen in the metal pendant lighting and black metal stools.

DEEP & MOODY

A moody, contemporary kitchen by Michele Plachter Design features black cabinetry and industrial influences, including five black pendant lights over the counter.



A TOUCH OF INDUSTRIAL

Equipped with modern appliances, hardware, and accessories, this kitchen features a touch of industrial inspiration with its large metal pendant lighting. Design by Laura Hodges Studio.



AN UNEXPECTED ACCENT



MAKING A STATEMENT

A loft in Chicago features a large, metal pendant over the dining room table. The eye-catching fixture complements the exposed brick walls, exposed pipes, and wood ceiling. Design by CK Interior Design.



LIGHT & BRIGHT

Here, Paul Brant Williger, Architect uses two large pendant lights to complete this white, bright kitchen.

FARMHOUSE STYLE

Boasting a custom white oak table, antique stone floor, and distressed pendant light, this farmhouse kitchen in Montana was designed by Koo de Kir Architectural Interiors and styled by Stacey Kunstel.



A POP OF COLOR

Paired with colorful barstools, these hanging marigold pendants add a bit of color to this white kitchen by Scott Sanders.



CHIC & CONTEMPORARY

Here, Florence Livingston Interiors creates a contemporary kitchen with walnut cabinetry, quartz countertops, and black pendant lights.



WHITE LIGHTS

A Napa Valley farmhouse features white cabinetry and a neutral backsplash, complemented by brown leather bar stools and four white pendants. Design by Jennifer Robin Interiors and architecture by Wade Design Architects.

GOOD AS GOLD

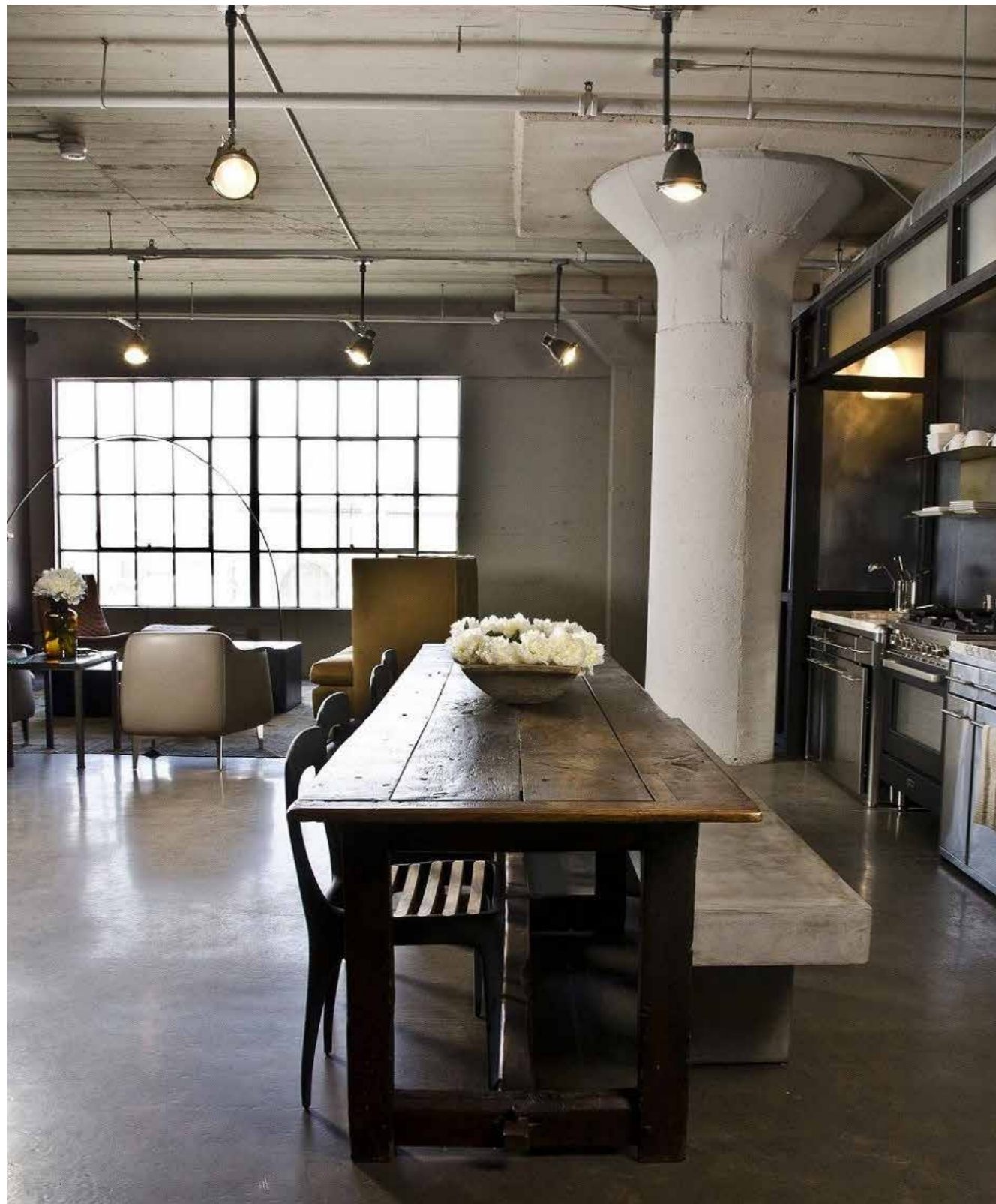
Boasting a neutral color palette, this chic kitchen by Mendelson Group features gold accents, from the pendant lights to the range vent.



PLAYFUL COLORS

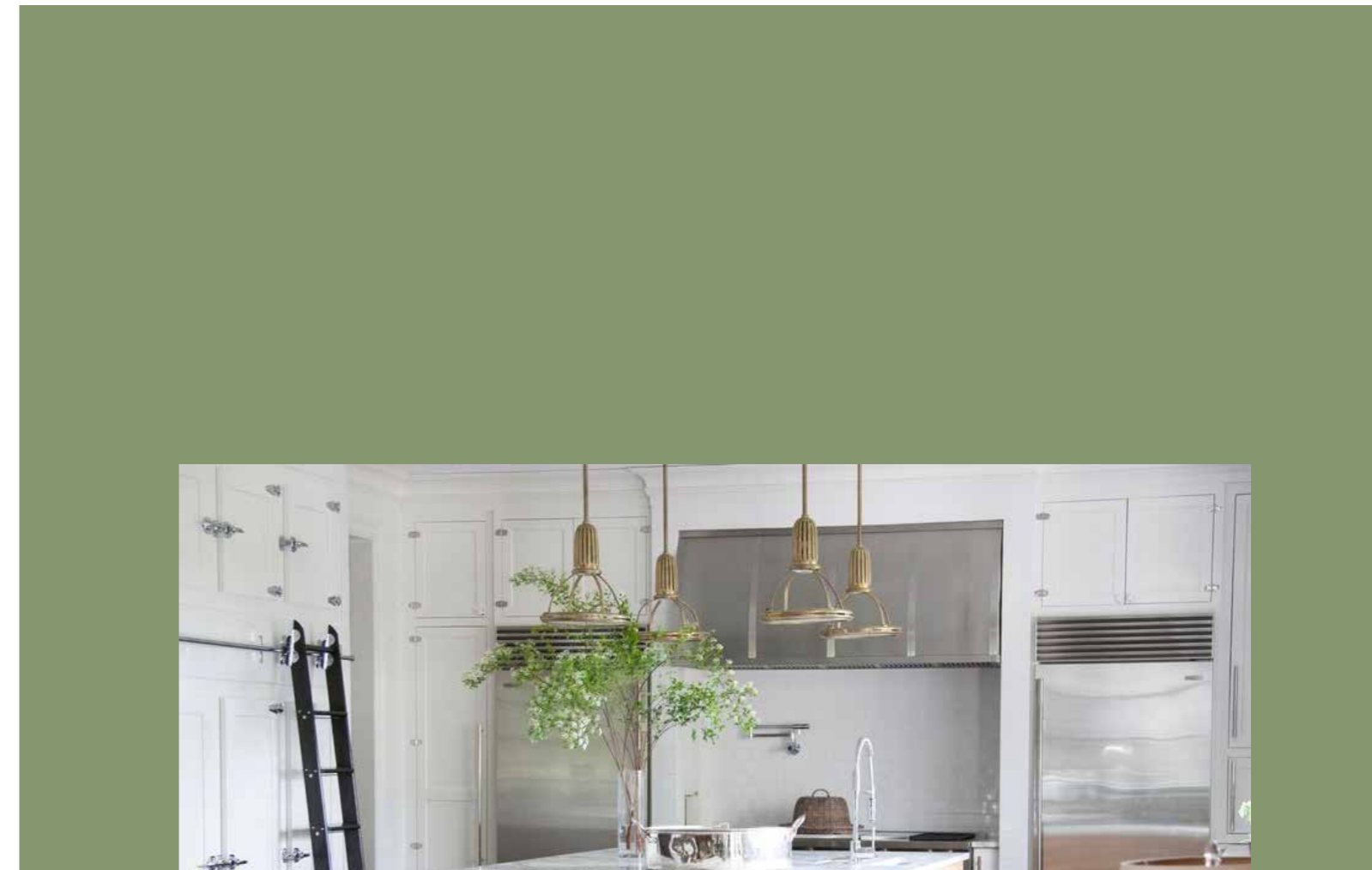


From the vibrant runner to the colorful vases, this playful space by KMID | Kate Maloney Interior Design is completed with metal pendant lighting.



A TRULY INDUSTRIAL SPACE

Located in the Arts District within Los Angeles, this industrial-style loft features small pendant lights across the ceiling. Design by Andrea Michaelson Design.



A TOUCH OF NATURE

Here, Nannette Brown embraces natural greenery to bring a touch of nature into an otherwise modern space. Thin, gold pendant lights also serve as a contrast to the bright interior.

visually inspired.

BRANDING

7654321
STUDIO







visually inspired.



GORIFFEE

BRANDING

GORIFFEE

Partnership & Quality coffee
abcdefghijklmnopqrstuvwxyz
123456789+*!#\$%&@

Secondary Textfaces

We receive samples of green coffee every day and thanks to the Ikawa Pro roaster we choose only the best beans. We are mainly engaged in specialty arabica, which accounts only for about 5% of the world's coffee production.

ABCDEFGHIJKLMNOPQRSTUVWXYZ
abcdefghijklmnopqrstuvwxyz
123456789+*!#\$%&@

Our prices are progressive, with larger volumes we offer a larger discount. We offer comprehensive services, fast managing of your orders, great prices, consulting and barista courses. We are here for you!

Visual Elements

GORIFFEE
ROASTERY







