

# INSPIRED<sup>58</sup>

April 2020 - **NOT FOR SALE** - An inspiration book of interior design references. - [www.mhllt.com](http://www.mhllt.com)

INTERIOR DESIGN



MAHALLATI  
INTERIOR DESIGN

*Creative Two-tone Wall Ideas That Make a Bold Statement*

*Wainscoting Ideas That Don't Skimp on Style*

*Grand, Double-sided Fireplaces to Inspire Your Dream Home*

Visit our website:  
**[www.mhllt.com](http://www.mhllt.com)**

## Designed to Be Distinguished

**Mahallati is an internationally acclaimed interior design, manufacturing and production firm based in Bali, Indonesia.**

With a team of over 120 artisans, designers, woodcrafters, metal workers, upholsterers and consultants in related fields with over

a century of collective industry experience; we work closely with our clients to create exceptional work. Our innovative workflow results in a true end-to-end solution and our growing portfolio of successfully executed projects have won awards and hearts across 3 continents.



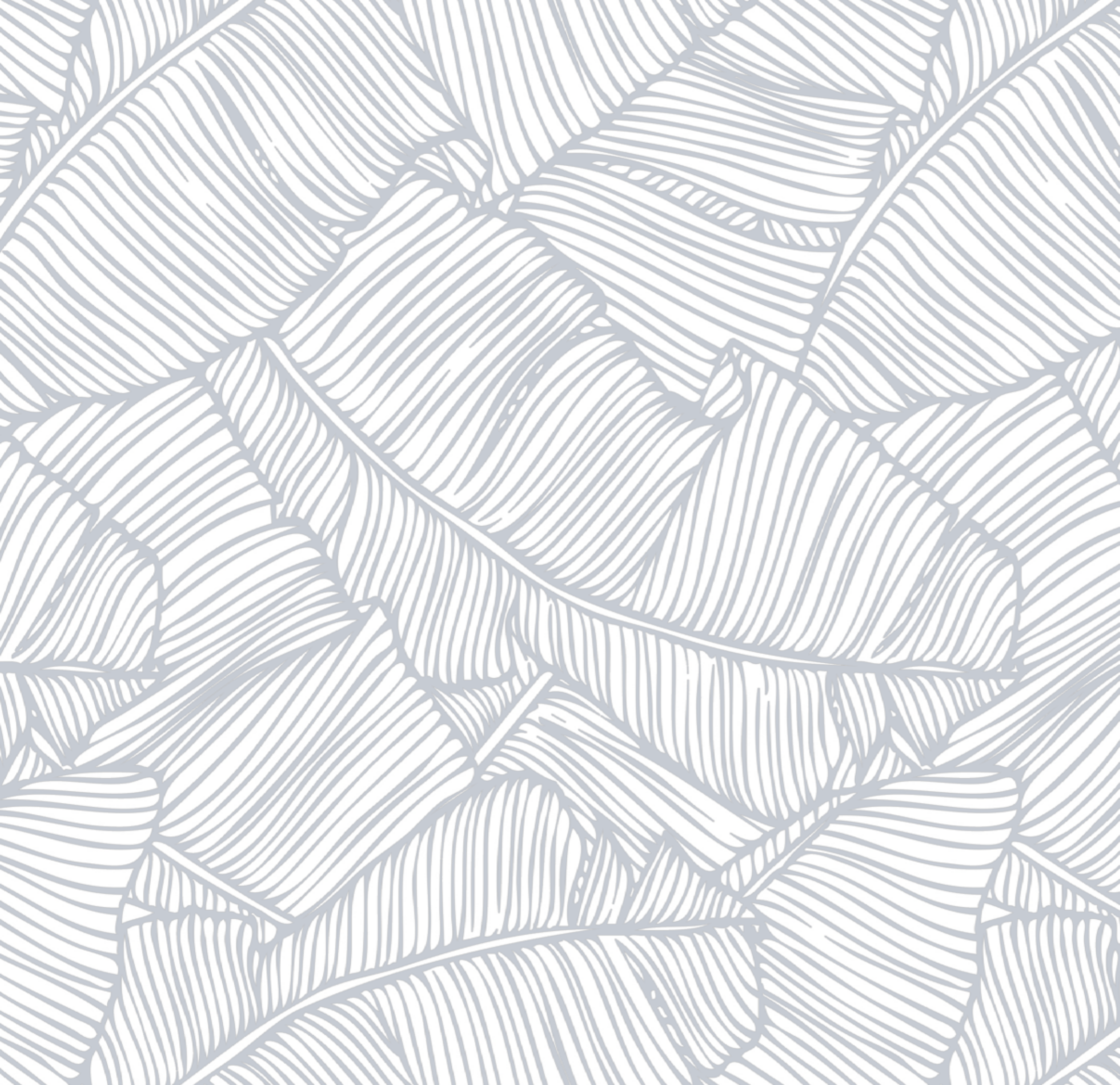
### CONTACT

+62 817 551 414  
[info@mhllt.com](mailto:info@mhllt.com)

### LOCATION

Jl. Gn. Tangkuban Perahu  
No.303, Padangsambian  
Klod, Denpasar Bar.,  
Kabupaten Badung, Bali  
80117





**WHAT'S  
INSIDE?**

Creative Two-tone Wall  
Ideas That Make a Bold  
Statement

Wainscoting Ideas That  
Don't Skimp on Style

Grand, Double-sided  
Fireplaces to Inspire  
Your Dream Home

Visually Inspired



15

CREATIVE  
TWO-TONE

# WALL IDEAS THAT MAKE A BOLD STATEMENT

Because two colors are better than one.



15

Looking to make a bold statement in your space? You can't go wrong with two-tone walls. Rather than settling for one paint color, step outside of your comfort zone and

choose two hues to boost your home's style factor. For inspiration, we've rounded up some of our favorite two-tone wall ideas below.





## NAUTICAL BLUE

Classic white wainscoting and a vibrant blue wallcovering by Elitis breathe life into this Hamptons living room.



## FRESH MINT

The walls in this spacious dining room are washed in a lively pairing of mint green and white. Gold borders finish the look.



## MOROCCAN STYLE

Blue patterned tiles by Popham Design add interest to the white walls in this 1950s home in Morocco.





## MODERN LUXURY

In this traditional dining room, the walls are divided between charcoal gray and white for a fresh, modern twist.



## CONTEMPORARY LOOK

Walls in off-white and black lend a modern flair to this small bedroom design scheme.





## FARMHOUSE PLAYROOM

A timeless mix of beige and white enhance this modern, well-organized playroom from Sarah Joy.



## DOSE OF NAVY

Crisp white tempers the rich navy blue walls in this airy dining room.





## OLD-WORLD CHARM

In this London dining area, wainscoting—along with the walls and ceiling in an 18th-century painted wallpaper—plays up the design's historical charm.

## TO THE CEILING

Dark gray—taken right up to the ceiling—and wainscoting in Benjamin Moore's White Dove add drama to this Oakland home's foyer.







## CLASSIC NEUTRALS

Cream-colored paint and wainscoting make the walls in this home office even more of a focal point.



## NEUTRALS FOR BALANCE

Neutral two-tone walls bring a sense of balance to this breakfast nook, featuring bold patterned flooring.





## BLUE MEETS WHITE

A playful palette of blue and white unite in this children's bedroom that's outfitted with bunk beds.



## POP OF PASTEL

Pastel blue moldings complement the door and white walls in this children's room.





## SUBDUED HUES

Soft gray wood paneling pairs well with this reading nook's white walls and ceiling.



## DRAMATIC GREEN

In this bathroom, a half wall of forest green wainscoting adds contrast to the crisp white.



Give your home wall-to-wall character with this timeless feature.

Once upon a time, wainscoting served a strictly utilitarian purpose. Back in the 18th century—you know, before central heating existed—adding wood to the lower half of the wall was a stylish and stealth way to insulate a room. But just because wainscoting is no longer required to keep your home warm doesn't mean it's lost all its magic. With the right pairing, this once old-school element can feel surprisingly fresh and modern.



# Wainscoting Ideas That Don't Skimp on Style

STYLISH





### SIMPLICITY IS KEY

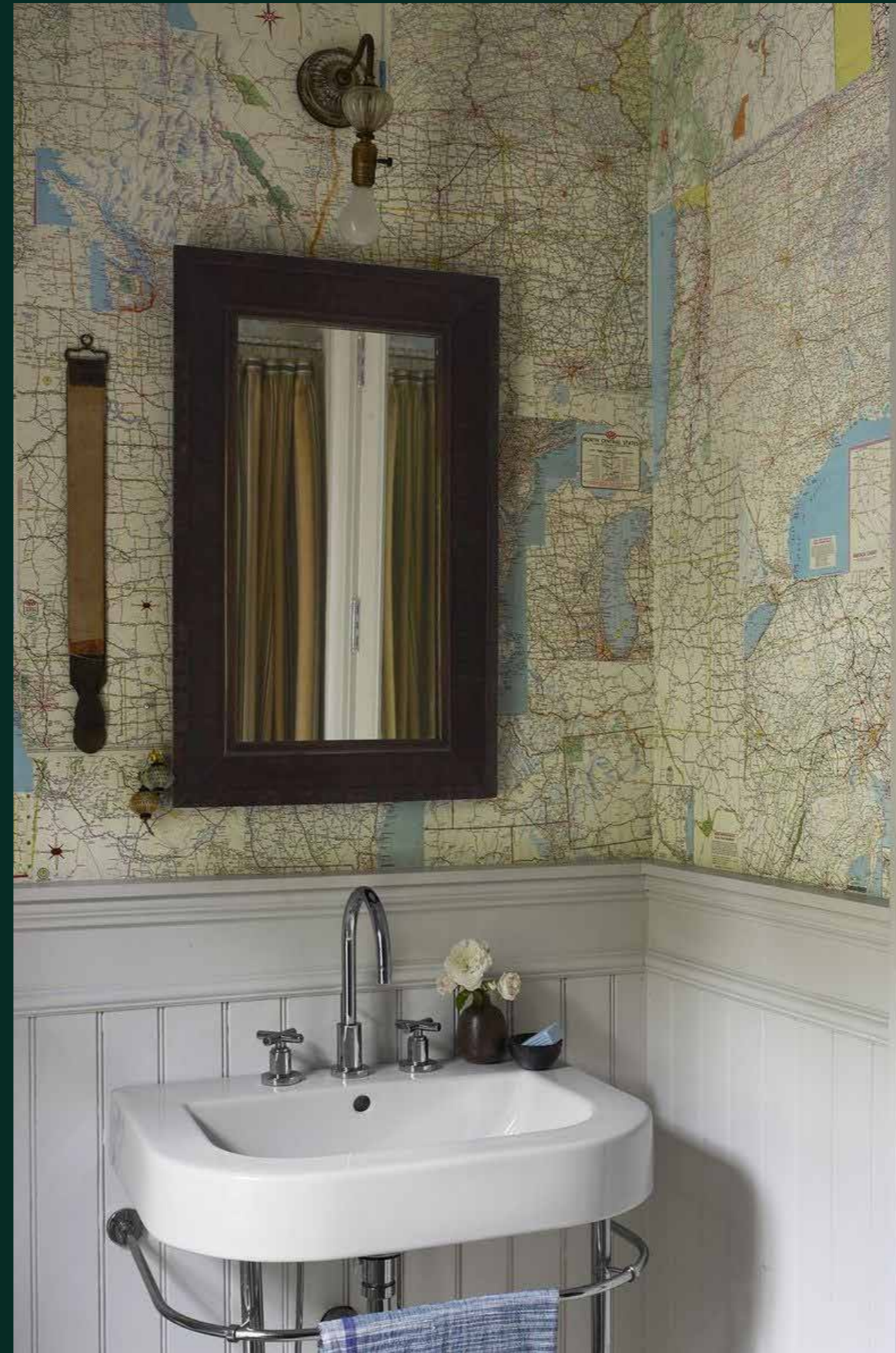
When it comes to wainscoting, simplicity doesn't have to be boring. In this Northern California home, the subtle shiplap paneling pairs nicely with the whimsical Pierre Frey wallpaper.



### MODERN MARVEL

Whoever thinks wainscoting is strictly reserved for traditional decor has never seen this Japanese-style home in Hunter, New York. When paired with sleek furniture and silhouettes, the pine wainscoting in this room looks refreshingly modern.





## MONOCHROMATIC MAGIC

Never underestimate the power of a painted wall. In the House of ELLE Decor, the tonal combination feels elegant, yet understated. The wall is painted in Pigeon, the wainscoting in Blue Gray, both courtesy of Farrow & Ball.

## BEAUTIFUL BEADBOARD

If you want to give your wainscoted walls a stylish edge, consider adding beadboard. Defined as a series of narrow wooden planks, beadboard is an effective way to add visual interest to your wainscoting. In this Georgian guest bathroom, the beadboard detailing is coated in Farrow & Ball's Cornforth White.



## FASHIONABLE FUNCTIONALITY

While an interior's wainscoting deserves to be celebrated, it doesn't have to dictate the rest of the room. By propping up a framed painting, installing a towel rack, and adding a strategically placed chair, this Connecticut home blurs the line between form and function.



## DIMENSIONAL DESIGN

This Lake Tahoe retreat takes wainscoting to the next dimension, thanks to its recessed beadboard and pronounced ledge.





## ALL THE WAY

Design rules are meant to be broken—and, yes, that includes wainscoting your walls. Wainscoting is generally defined as placing wooden panels at the bottom half of your wall, but why stop there? As this Upper West Side prewar apartment proves, the sky (or ceiling) is the limit.



## WOW WITH WALLPAPER

Embrace your bold eye for design by pairing lively wallpaper with a colorful, wainscoted base. The combination in this Elizabeth Roberts-designed condo gives the dining room a rich and welcoming atmosphere.



## OLD MEETS NEW

Want to revitalize traditional wainscoting? Take a cue from this 18th century Parisian apartment and douse the walls in a vibrant shade of red.



## COUNTRY CHARM

Painted in Farrow & Ball's Dimpse, the full beadboard wall in Amanda Seyfried's Catskills home is equal parts rustic and relaxing.



## DEFY GRAVITY

Bring your wainscoting idea to new heights, literally, as seen in this Portola Valley home. In this home office, the full beadboard wall creates a designated desk area. The airy roller shades, woven desk chair, and braided hemp rug from Rose Tarlow give this traditional design element a California cool edge.





## BE BOLD

Turn your wainscoted walls into the room's wow factor by dialing up the drama. In this Los Angeles house tour, the full-wall wainscoting and Benjamin Moore's Juniper Green hue pop nicely against the black ceiling and dining set.



## COLOR BLOCKED BRILLIANCE

Use your wainscoting to offset a bright wall color, as seen in this Hamptons home. The crisp white accents keeps this nautical space grounded and serene.



## TONAL TREATMENT

In this San Francisco home, decorator Palmer Weiss reimaged this wainscoted dining room in a palette of earthy, monochromatic tones. John Rosselli chairs and photographs by Vincent Fournier round out the space, striking a balance between traditional and terrestrial.



GRAND



## Double-sided Fireplaces

*to Inspire Your  
Dream Home*

Double the space,  
double the warmth.





## MODERN MATERIALS

In this room decorated by Abaca Interiors, a board-form concrete fireplace separates a living area and dining area.



## FINE LINES

A contemporary fireplace marks the boundary between the kitchen and living space. The architecture is by Blaze Makoid Architecture, and the interior design is by David Scott Interiors, LTD.





## FINE LINES

A contemporary fireplace marks the boundary between the kitchen and living space. The architecture is by Blaze Makoid Architecture, and the interior design is by David Scott Interiors, LTD.



## NEUTRAL SPECTRUM

A half fireplace wall washed in gray and decorated with artworks offers a creative counterpoint to the wall of windows. Interior design by Benjamin Johnston Design.



## VISUAL PLEASURE

In this sunken living room from Guggenheim Architecture and Design Studio, the fireplace doubles as an accent wall.





**RUSTIC WITH  
A TWIST**

In this open-concept area, LKID demonstrates how a rustic-meets-modern fireplace can benefit from accents that further mix the two styles.



**STATEMENT  
ACCESSORIES**

This design from BarnesVanze Architects Inc features a sleek, double-sided fireplace; a contemporary and creative light fixture adds visual interest.



**THE GREAT  
OUTDOORS**

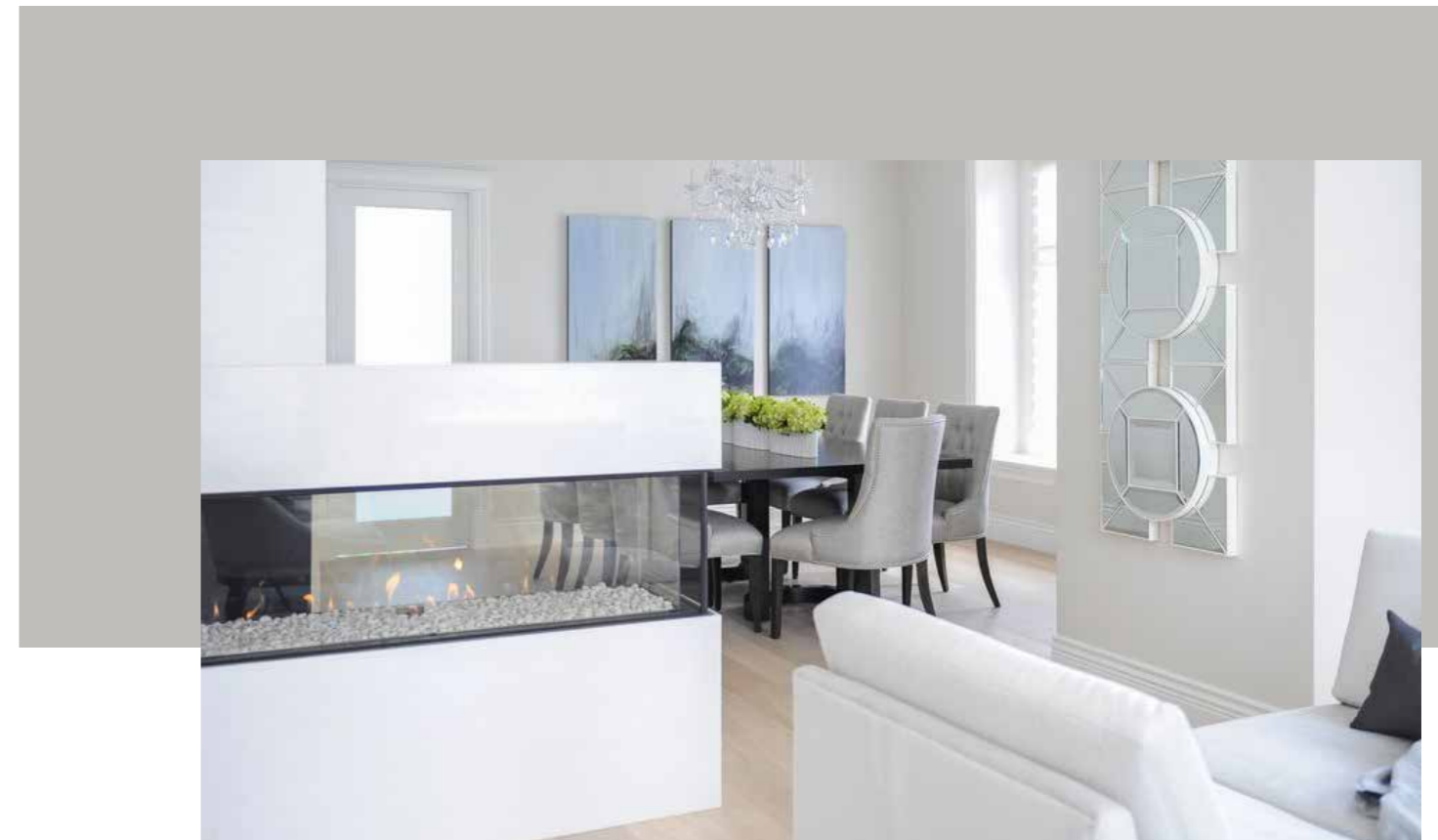
Here, Dodson Interiors styled this outdoor loggia with a plush gray sectional.





## LUXE MODERN

Built by Stokkers + Company and designed by Peter Cook Architect AIA, this double-sided fireplace helps create a bold, contemporary atmosphere. The interior design is by PCI Interiors / Ngala Trading.



## STANDOUT TRANSITIONAL

Enviably Designs countered this glossy, contemporary fireplace with a brisk, transitional interior design.





■ ■

## CARAMEL TONES

A honey-onyx, back-lit fireplace matches the contemporary, caramel details in this interior design from Wesley-Wayne Interiors.

■ ■

## FOR THE BEDROOM

Talbot Cooley shows how a double-sided fireplace can effortlessly accentuate a master bedroom suite.





## HIGHLIGHTED DETAILS

This marble fireplace becomes even more beautiful when paired with a dark marble end table, neutral lounge chairs, and bold, metal pendant lights. Interior design by Trip Haenisch & Associates.

## LOOKING TOWARD THE OUTDOORS

Leather sofas decorate this indoor/outdoor room with an interior design by dk INTERIORS.





**À LA FRANÇAISE**

Carden Cunietti decorated this chalet in France in a relaxed, transitional style.



**MODERN CENTERPIECE**

A fireplace decorates an outdoor living space from Blaze Makoid Architecture.



**IN AND OUT**

Facing both the indoors and out, this fireplace in a design from Vita Design Group emphasizes the connection between both spaces.



visually inspired.

# BRANDING

ALBANA













visually inspired.



FFEEL  
COFFEE

BRANDING











## Web Design



### Kaffee trifft Frucht

ffeel: ist ein natürliches Erfrischungsgetränk, das die belebende Wirkung von Cold Brew Coffee und den frischen Geschmack von Superfrüchten zusammenbringt.



**Beliebt**  
Cold Brew Coffee mit 100% reinem Kaffee.

**Erfrischend**  
Leckere Superfrüchte sorgen für ein herrliches Aroma.

**Energisch**  
Blaubere Zucker für einen vorzüglichen Geschmack.

**Spritzig**  
Mit einem guten Schuss besonderer Kohlendioxid.

**Brewed**  
Ohne gar Zucker und ohne künstlichen Zucker.

**Vegetar**  
Alle Komponenten haben tierische Produkte.

### Aller neuen Dinge sind drei



**Grapefruit Yuzu**  
Erfrischende Säure der Zitrusfrüchte, die von einer angenehm milden Kaffeeart abgeleitet wird.

[Jetzt kaufen](#)



**Calamansi Tangerine**  
Entdecke den Geschmack aus natürlichem frischen Kaffee und dem leicht sauren Fruchtsaft.

[Jetzt kaufen](#)



**Coconut Mango**  
Genieße die Harmonie aus Mangorand dem herben Kaffee – und zum Abschmecken das köstliche Kokosaroma.

[Jetzt kaufen](#)



58 INSPIRED